

2022  
**ANNUAL  
REPORT**







## Dear partners,

Our community partners constantly inspire us with their tenacity and creativity, despite the many challenges they face, and 2022 was no different. Remarkably, **last year we reached an astounding 38,943 people across 33 communities in rural Sierra Leone!** Our partners completed 11 community projects, began four new projects, and 323 women graduated from our women's economic empowerment and business skills program. And, we grew our network by welcoming four new communities as partners.

Last year, our Board adopted a new strategic plan, which includes our biggest goal yet: expanding our reach to all 15 rural districts throughout Sierra Leone. Through our community-led model and partnerships, we are determined to achieve this goal. In the coming years, we will double down on our focus of investing in people, so that they can reach their full potential.

**For our partners, the lessons learned in 2022 were life changing.** Our partners led transformation in the four impact areas that drive our work: inclusive leadership, social cohesion, gender equity, and resiliency. We invite you to read Baindu Amara's story on page 12, which is just one of many stories about how OneVillage Partners programming and your generous support are transforming lives in Sierra Leone.

Your support in 2022 made our accomplishments and those of our partners possible. Thank you for your continued partnership and trust in amplifying the power of people and communities in rural Sierra Leone.

In partnership,

**Pete Janzen** & **Jill LaLonde**  
Board Chair      Executive Director  
2021-2022

*Tarjo Saidu, NOW participant from Kodibu, teaching her colleagues how to use the NOW workbook*



# Reaching all of rural Sierra Leone



When we adopted our new strategic plan, we also refined our mission and vision statements and set new goals to build on the success of our work in the Kailahun district in Eastern Sierra Leone. These new commitments will guide our efforts to reach all 15 rural districts across Sierra Leone in the coming years.

## Mission Statement

*The mission of OneVillage Partners is to enhance collective wellbeing across Sierra Leone by investing in people and communities through partnerships.*

## Vision Statement

*We envision a future where Sierra Leoneans amplify their collective power to lead transformational change in their communities.*

# Expanding our impact

By expanding our reach, we'll be making a greater impact throughout Sierra Leone. Our goals include:



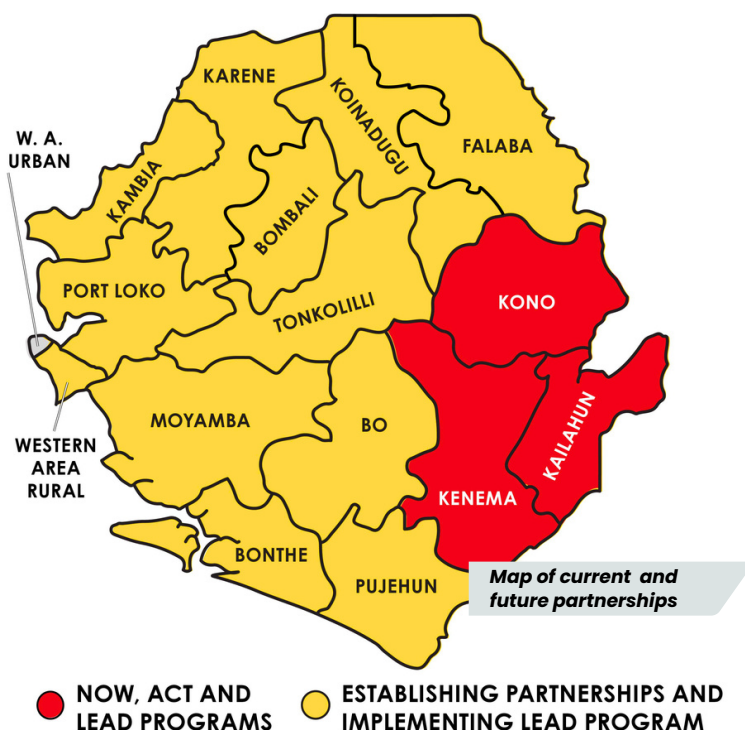
**100** cumulative community-development projects

**70%** reduction in diarrheal disease for communities implementing water and sanitation projects

**1,000** women participating in the NOW program

**\$100k** in collective savings of NOW participants

**75%** of community members achieve and sustain a measurable and significant reduction in multidimensional poverty





# Advocating and networking for sustained community wellbeing



Through the Lead program, volunteer-leaders are trained in advocacy, leadership skills, proposal writing, and networking best practices. One of the outcomes of the Lead program is that **communities are able to make connections with their local government representatives**. OneVillage Partners helps facilitate these meetings between local leaders and volunteer-leaders, so that together they can collaborate on the community's identified development project.

In 2022, **66 volunteer-leaders from 11 communities** submitted 10 project proposals to a selection committee that included OneVillage Partners staff, local government representatives, and community members.



*Gbeka and Maloma community members working together on construction for their Lead project*



*Joseph A. Tibbo, Lead program participant from Mamboma, works with his small group on creating a project budget*

The selection committee chose four projects to fund through the Lead program.

These four projects will be completed in 2023 and will address regional challenges in:

- HEALTH
- ROAD INFRASTRUCTURE
- WATER & SANITATION
- FOOD SECURITY



## This is what inclusive leadership looks like.



When communities and local government connect, communities access more than local expertise. For communities, these connections perpetuate future successes and improved wellbeing. Extending their support network and knowledge of training also creates opportunities for future development. Connections like these improve a community's ability to advocate with decision makers and allows their voices are heard by their local representatives.

With an emphasis on partnership and collaboration with local leaders, **communities are successfully advocating and networking to sustain their wellbeing.**

**84%**

of community members believe that decision-making is shared among leaders and the community

**221%**

increase in community members holding a leadership position

**95%**

of community members in attendance at community meetings



*Fofie B. Kallon, volunteer-leader from Forlu, shares his excitement about partnering with OneVillage Partners with his community*

# Building sustainable futures through collective wellbeing



In 2022, we had four new community partners - Forlu, Ngiehun, Mandu Taawahun, and Nyeama. Each of these four communities chose their first development projects to address their need for better access to clean water and improved sanitation facilities. And each of these communities had the same goals: **to reduce diarrheal disease and to improve health and wellbeing for all.**



*Volunteer-leaders from Ngiehun*

## Forlu and Ngiehun

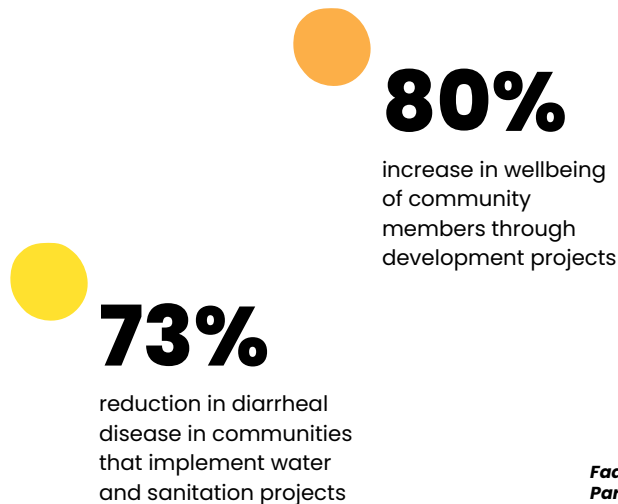
Designed projects to construct new water wells and to refurbish existing ones to increase access to clean water for themselves and their neighbors.



*Volunteer-leaders from Mandu Taawahun*

## Mandu Taawahun and Nyeama

Constructed new latrines to increase access to clean sanitation facilities and reduce open defecation throughout their communities.



*Faada Musa, Paramount Chief from Bombohun, using his community's new handwashing station*





Hawa Amara, NOW participant from Kodibu

## This is what resiliency looks like.

Projects like new water wells and latrines solve an immediate challenge, but the true benefit is in how the **communities, with improved health and wellbeing, become stronger over time.**

Women are also becoming stronger over time. Last year, all NOW program participants achieved their financial goals and are successfully building their savings. The result is that they are more prepared to respond to economic shock, if and when it should happen.

Rural Sierra Leoneans are tapping into their skills and knowledge to implement projects that improve their collective wellbeing. Most significantly, their efforts are sustainable, making them more resilient when future challenges arise.



# 100%

of NOW program participants achieved their first financial goal



# 99%

of projects are sustained 3 years after project completion



# 80%

of households were able to respond to an economic shock



Women from Kodibu celebrate their graduation from the NOW program





# Collaborating and building networks of change agents

The Lead program expands on the lessons learned in the Community Action program and encourages communities to work together on shared challenges. While participating in the Lead program, volunteer-leaders from the communities of Mamboma and Ngolahun worked together to develop a proposed renovation project on the bridge that connects the two communities with one another.



Richard Momoh, Lead program participant from Mamboma

By renovating the bridge and ensuring that it can sustain continued daily use, Mamboma and Ngolahun volunteer-leaders envision the farmers of their communities, along with five additional nearby communities, being able to better access their farming land.

**With increased access to their farms, agricultural productivity and food security will increase for these communities and their surrounding neighbors.**

The collaborative project is scheduled to finish in 2023.



*"Communities can only overcome challenges if they work [in] unity."*

**Ansumana Massaquoi,**  
Kambama community member

*Lead program participants from Mamboma*





## This is what social cohesion looks like.

By working together, like the volunteer-leaders from Mamboma and Ngolahun, rural Sierra Leoneans are creating networks of change agents. With collaboration and partnership, communities can more successfully work together to overcome their shared challenges.

**The result is a more unified and collaborative network of communities.**



*Hawa Kallon, volunteer-leader from Nyeama, speaking to her community*



*Hawa Senesie, Lead program participant from Gbeka*

## 2022 Lead Program Highlights

- **80%** of households are contributing money, resources, and time to their community development projects
- **78%** of program participants met with other community members to discuss their community's development
- **13** neighboring communities will benefit from the 2022 Lead projects

**90%**

of community development projects met their project goal(s)

**98%**

of NOW participants shared the NOW curriculum with other women

**80%**

of program participants believe their community works together to solve their challenges and meet their needs

# Increasing income, food security, and women's empowerment

NOW: AgriBusiness is the third and newest phase of the NOW program. In this phase, women are trained in innovative agricultural concepts and techniques. The result is that women know how to reduce food insecurity and hunger and increase income and wellbeing for themselves and their whole community.

In 2022, 140 women from six different communities participated in the program. **And the results were incredible:**

**100%**

of participants reported an increase in income

This increase in income benefits the individuals and their families, and it also allows them to contribute to the economic development of their communities.

**95%**

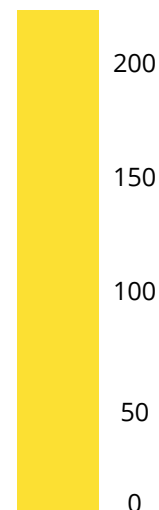
of participants reported having enough food for their household for the next month

This is a significant improvement from just 35% at the beginning of the program. It indicates that with the training, women are able to improve their food security and reduce hunger for their families.



**219**  
bushels cultivated by participants by the end of the program

bushels of rice provided by OneVillage Partners at the start of the program **24**





## This is what gender equity looks like.

Through NOW: AgriBusiness, women are successfully improving their financial wellbeing. They are reducing food insecurity and hunger for themselves and their families. And, they're also contributing to the economic wellness of the entire community.

**Rural Sierra Leonean women are amplifying their power and creating impact.**

**154%**  
increase in women with improved confidence after the NOW program

**148%**  
increase in men doing at least one traditional female task

**124%**  
increase in women speaking in public

**98%**  
of women are involved in household decision making and finances



NOW: AgriBusiness participants from Yandohun

### 2022 NOW Program Highlights

**323**

NOW program participants

**\$8,500** USD

collective savings among NOW participants

*"Our abilities are... strong as a group."*

**Fatmata Dugba,**  
NOW participant from Mamboma



**“OneVillage Partners training enhanced my ability to improve agricultural productivity”**

**Story told by Baindu Amara, volunteer-leader from Magbema**

Transcribed and translated by Philemon Vandi McSenesie and Vivian Moigua, OneVillage Partners staff

Baindu Amara, a 40-old farmer lives in Magbema, a community situated in Eastern Sierra Leone with more than 900 inhabitants. Agriculture, especially upland and swampland rice farming, is the main economic activity of the people of Magbema. **This is Baindu's story.**





**For many years, agricultural activities had not been productive among the people of Magbema, including Baidu.** Baidu had too many crops and little knowledge of the farming calendar. She never thought to plant crops in a specific farming season to contribute to productive farming. Baidu struggled to save enough money to expand the size of her farm. She did not participate in any farming groups and was unable to estimate how many bushels of rice she grew. She never had a seed bank for the next planting season. "Tomorrow may be fine for itself," Baidu stated. Baidu did not reap many benefits from her farm, and she mismanaged the little produce she got from the farm work. To support her family, Baidu had to work for other people and obtained loans with high interest from other community members.

OneVillage Partners collaborated with the community of Magbema in 2018, providing training and sensitization of long-term needs to leaders and the community. **Baidu was motivated and wanted to join the Community Action program.** Once she was chosen to be a volunteer-leader, Baidu attended training on best agricultural practices, such as planning, savings, budgeting, using a farming calendar, and many more steps for productive farming. At first, it was difficult for Baidu to understand the agricultural calendar, but she persevered and learned the importance of appropriate cultivation seasons. To increase farmers' revenue, Baidu and the other volunteer-leaders assisted the community in choosing community stores and dry floors as their top priorities for their development projects.

Baidu applied what she learned by starting a home garden to [sell her crops to] help her make an income. **She also began planning and budgeting for more effective and more sustainable farming.** Baidu later joined two local farming groups to boost her agricultural activities and help her cultivate more acres.

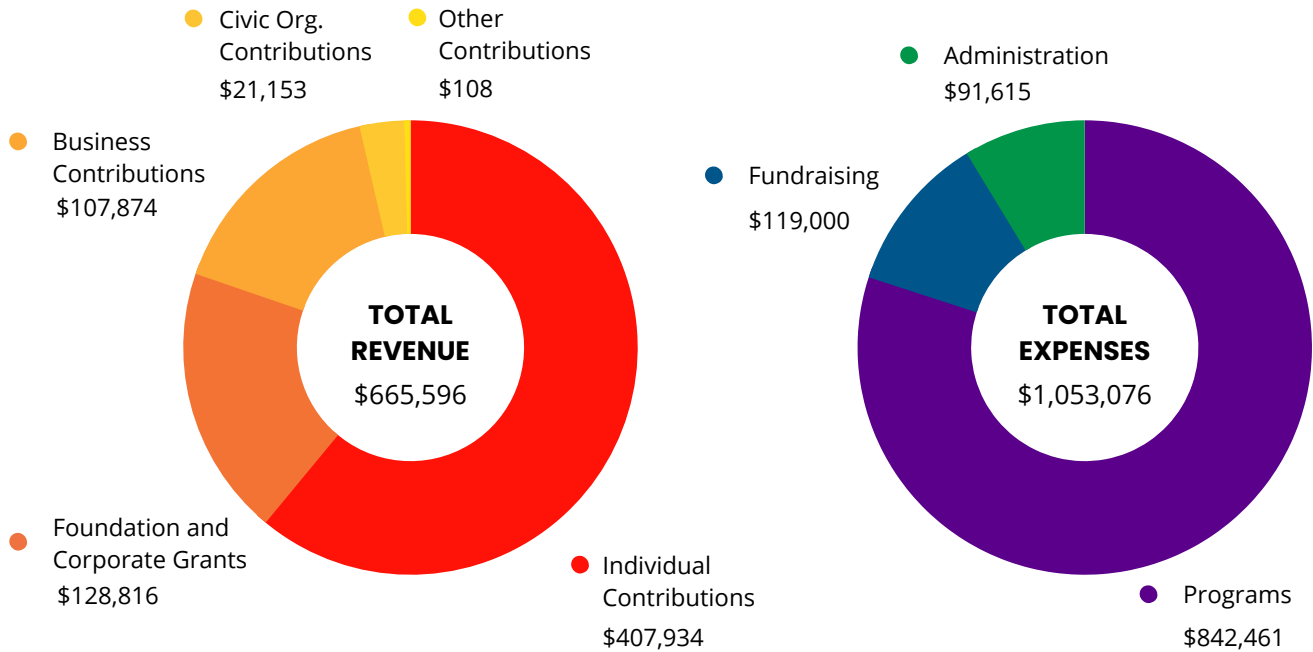
*"Never give up because of challenges. Perseverance and eagerness to learn...will pave the way to learn lasting skills for future development."*

**Baidu Amara,**  
Volunteer-leader from Magbema

**Baidu Amara's knowledge of farming work and her income continues to improve day by day.** Her knowledge of different types of seasonal calendars, planning, budgeting, and her concentration on a single agricultural activity at a time continue to improve. Last year, she cultivated three bushels of swamp rice and harvested 17 bags of husk seed rice. She adequately controls her produce after every harvest and saves for the next planting season. Baidu joined a savings group and earned 800 Leones (\$37.20 USD) to boost her farming work and family goals, such as her children's education. Baidu even hired laborers to support her agricultural work. "I was able to pay 550 Leones (\$25.58 USD) for the planting of five acres of a palm oil plantation," Baidu proudly shared.

Baidu is no longer financially dependent on her husband for things like clothing, she no longer takes risky loans, she can buy seeds to cultivate, and she can provide food for her family. **Today, Baidu is admired by her neighbors for her remarkable improvement in agricultural activities.**

# 2022 Financial Summary



*The 2022 excess of expenditures over revenues was intentional, as the OneVillage Partners Board of Directors sought to invest significant accumulated cash on hand into organizational infrastructure and meet strategic goals to develop and expand programming in Sierra Leone. OneVillage Partners reserves were sufficient to cover the deficit, and the reserve balance remains greater than the upper end of recommended reserve amounts of 3-6 months of operating expenses.*

Majoe community member carrying bricks to the community's Lead project site







## 2022 Board Members

**Kathleen Burzycki**  
Henkel

**Dave Horan**  
UBS

**Renee Pardello**  
University of Minnesota  
(retired)

**Emilia Smith**  
Wells Fargo

**Jessica Cook**  
Ehlers

**Roseanne Hope**  
Hope Law

**Ramya Rauf**  
Northwest Area  
Foundation

**Dave Swanson,**  
Secretary  
Dorsey and Whitney,  
LLP

**Greg Crowe,** Treasurer  
Ehlers

**Peter Janzen,** Board Chair  
Land O'Lakes (retired)

**Shétu Rose,** Vice Chair  
Diverge Finance

**Paul Walters**  
Deloitte

**Jeff Hall,** Founder  
Hall and Sweeney LLC

**Andrew Kamara**  
US Bank

**Michael Henley**  
Development  
Consultant (retired)

**Nicole Leimer**  
Faegre Drinker Biddle  
& Reath

**Michelle Salmen  
Williams**  
Meta

*Community member from Maloma*



## 2022 Sierra Leone Community Partners

Foindu

Yandohun

Massayiema

Forlu

Jokibu

Kigbai

Baaka/Tentihun

Nyeama

Pejehun

Pejewa

Nianahun

Mandu Taawahun

Mamboma

Maloma

Magbema

Giehun

Grima

Makka

Peje Baoma

Daru Junction

Gbeka

Madina

Bombohun

Malema

Ngolahun

Bandajuma

Gouma

Kodibu

Majoe

Lalehun

Kambama

Ngiehun

Kortuma



**OneVillage Partners Sierra Leone Team**



Community members from  
Kambama fetching clean water



**Thank you for your support.**

---

OneVillage Partners  
PO Box 26055  
Minneapolis, MN 55426  
(612) 879-7590

Follow on social media for more!



[info@onevillagepartners.org](mailto:info@onevillagepartners.org)

---

OneVillage Partners  
2 Maria-Wai Street,  
Kenema, Sierra Leone  
+232 88462065

---

THANK YOU TO ONEVILLAGE PARTNERS COMMUNICATIONS OFFICER & PHOTOGRAPHER, SAMUEL AMARA